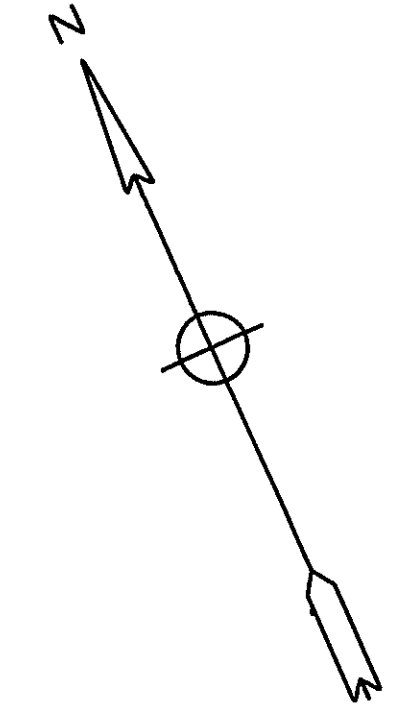


SEE SHEET 28

SEE SHEET 29



SEE SHEET 27

87.01

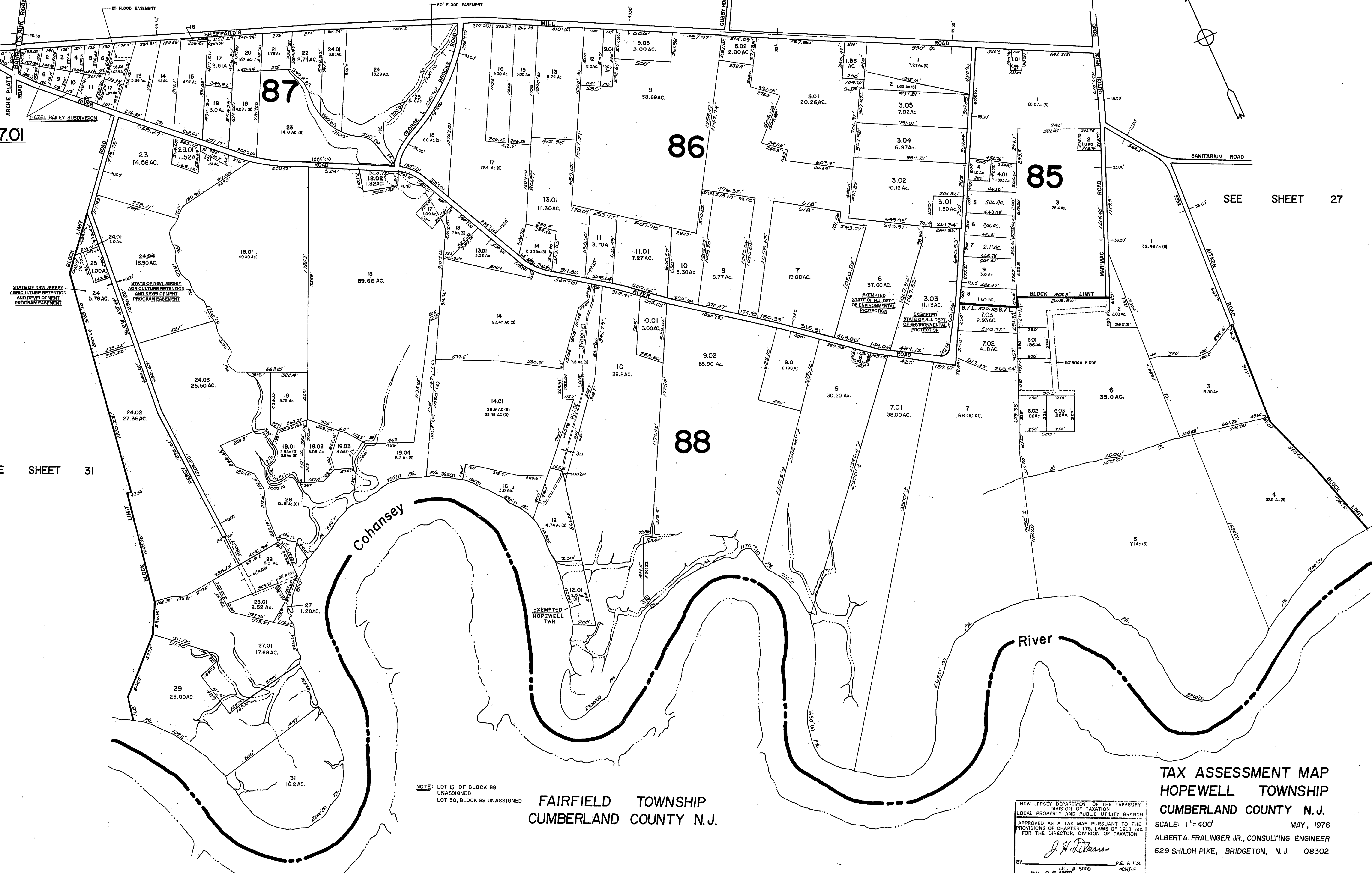
87

86

85

88

SEE SHEET 31



NOTE: LOT 15 OF BLOCK 88 UNASSIGNED LOT 30, BLOCK 88 UNASSIGNED

FAIRFIELD TOWNSHIP CUMBERLAND COUNTY N.J.

NEW JERSEY DEPARTMENT OF THE TREASURY DIVISION OF TAXATION LOCAL PROPERTY AND PUBLIC UTILITY BRANCH APPROVED AS A TAX MAP PURSUANT TO THE PROVISIONS OF CHAPTER 175, LAWS OF 1913, ETC. FOR THE DIRECTOR, DIVISION OF TAXATION

TAX ASSESSMENT MAP HOPEWELL TOWNSHIP CUMBERLAND COUNTY N.J. SCALE: 1"=400' MAY, 1976 ALBERT A. FRALINGER JR., CONSULTING ENGINEER 629 SHILOH PIKE, BRIDGETON, N.J. 08302