

SEE SHEET 25

SEE SHEET 24

SEE SHEET 25

SEE SHEET 28

SEE SHEET 28

SEE SHEET 28

SEE SHEET 28

SEE SHEET 28

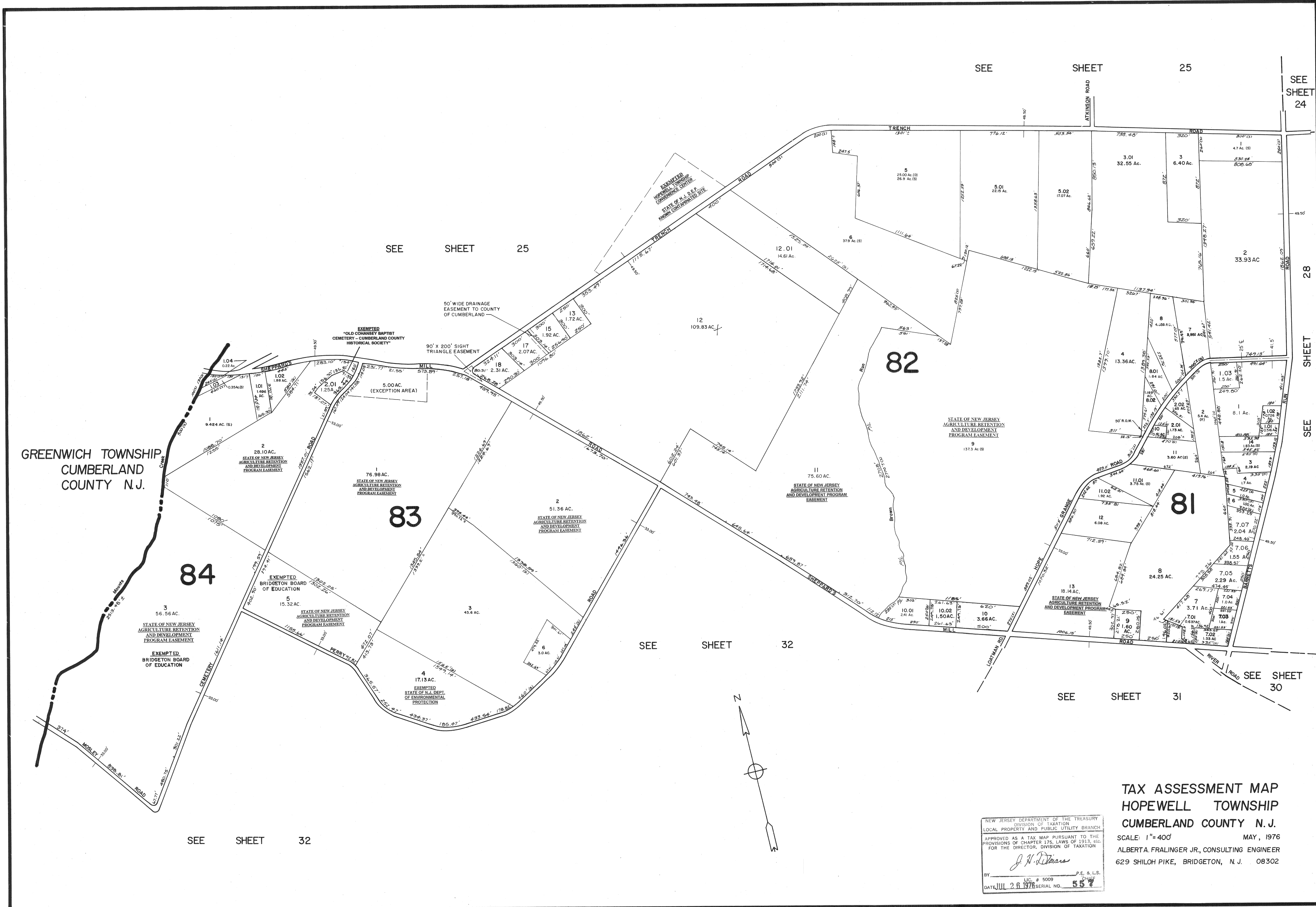
SEE SHEET 28

SEE SHEET 28

SEE SHEET 28

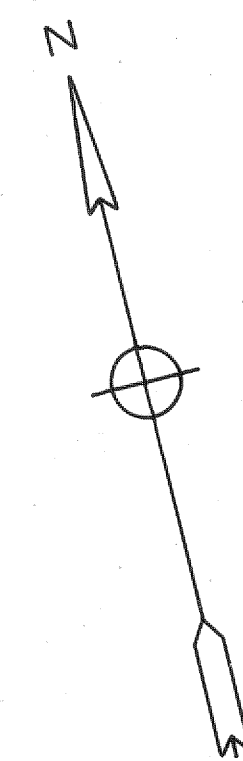
SEE SHEET 28

SEE SHEET 28



TAX ASSESSMENT MAP
HOPEWELL TOWNSHIP
CUMBERLAND COUNTY N.J.
 SCALE: 1"=400'
 MAY, 1976
 ALBERT A. FRALINGER JR., CONSULTING ENGINEER
 629 SHILOH PIKE, BRIDGETON, N.J. 08302

NEW JERSEY DEPARTMENT OF THE TREASURY
 DIVISION OF TAXATION
 LOCAL PROPERTY AND PUBLIC UTILITY BRANCH
 APPROVED AS A TAX MAP PURSUANT TO THE
 PROVISIONS OF CHAPTER 175, LAWS OF 1913, ETC.
 FOR THE DIRECTOR, DIVISION OF TAXATION
 BY: *J. H. Deane*
 LIC. # 5009
 DATE: JUL 28 1976 SERIAL NO. 557



SEE SHEET 32

SEE SHEET 32

SEE SHEET 31

SEE SHEET 30

GREENWICH TOWNSHIP
 CUMBERLAND
 COUNTY N.J.