

CITY OF BRIDGETON
CUMBERLAND COUNTY N.J.

SEE SHEET 19

SEE SHEET 20

SEE SHEET 21

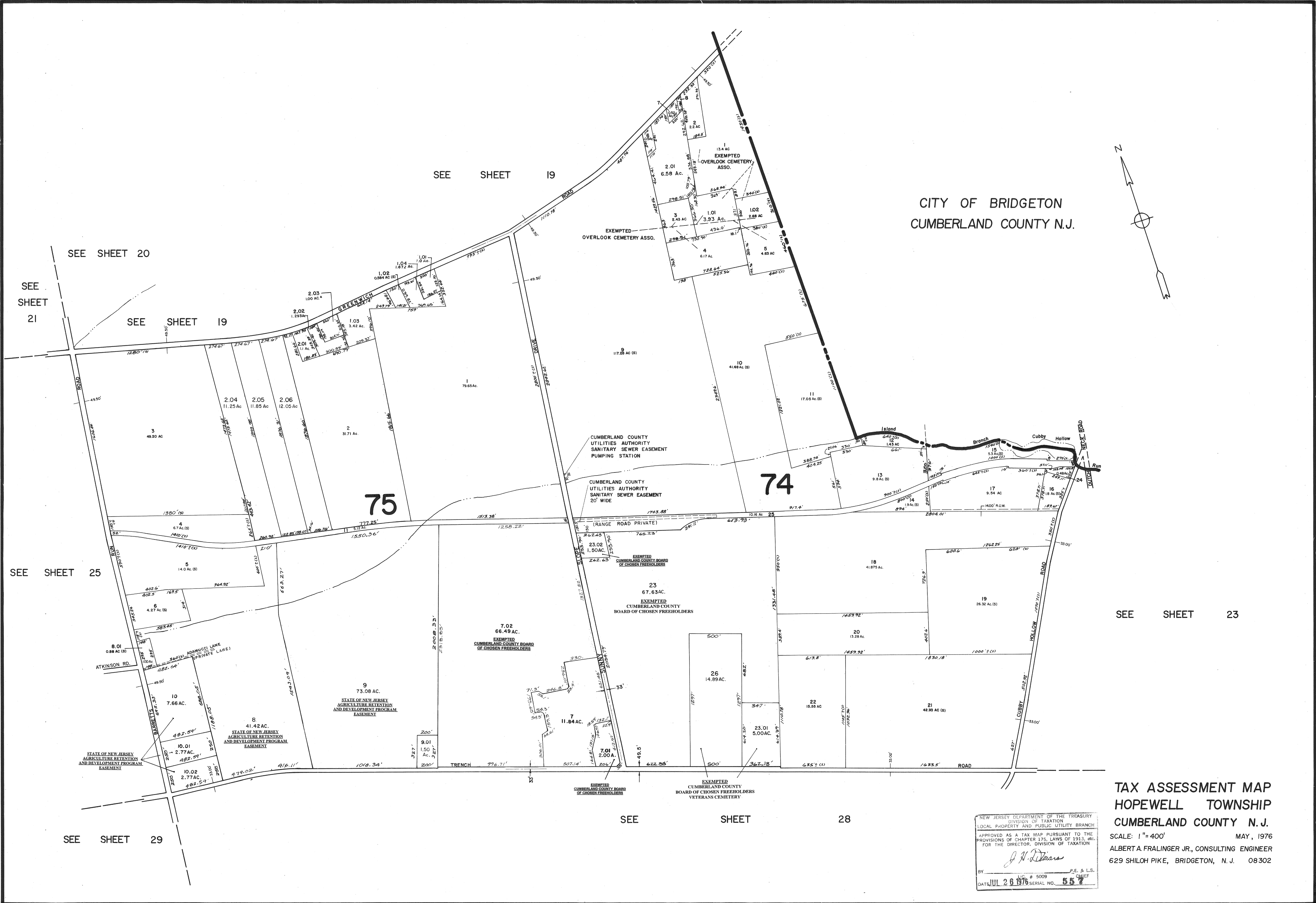
SEE SHEET 19

SEE SHEET 25

SEE SHEET 23

SEE SHEET 28

SEE SHEET 29



TAX ASSESSMENT MAP
HOPEWELL TOWNSHIP
CUMBERLAND COUNTY N.J.
SCALE: 1" = 400' MAY, 1976
ALBERT A. FRALINGER JR., CONSULTING ENGINEER
629 SHILOH PIKE, BRIDGETON, N.J. 08302

NEW JERSEY DEPARTMENT OF THE TREASURY
DIVISION OF TAXATION
LOCAL PROPERTY AND PUBLIC UTILITY BRANCH
APPROVED AS A TAX MAP PURSUANT TO THE
PROVISIONS OF CHAPTER 175, LAWS OF 1913, ETC.
FOR THE DIRECTOR, DIVISION OF TAXATION

J. N. ...
P.E. & L.S. CHIEF
DATE: JUL 26 1976 SERIAL NO. 557