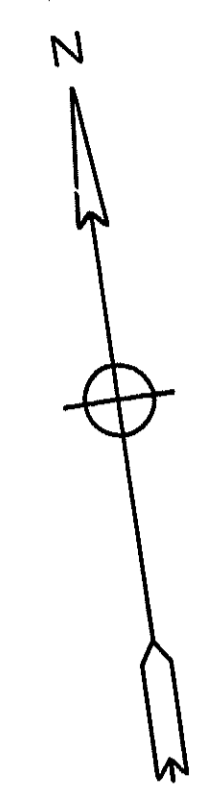
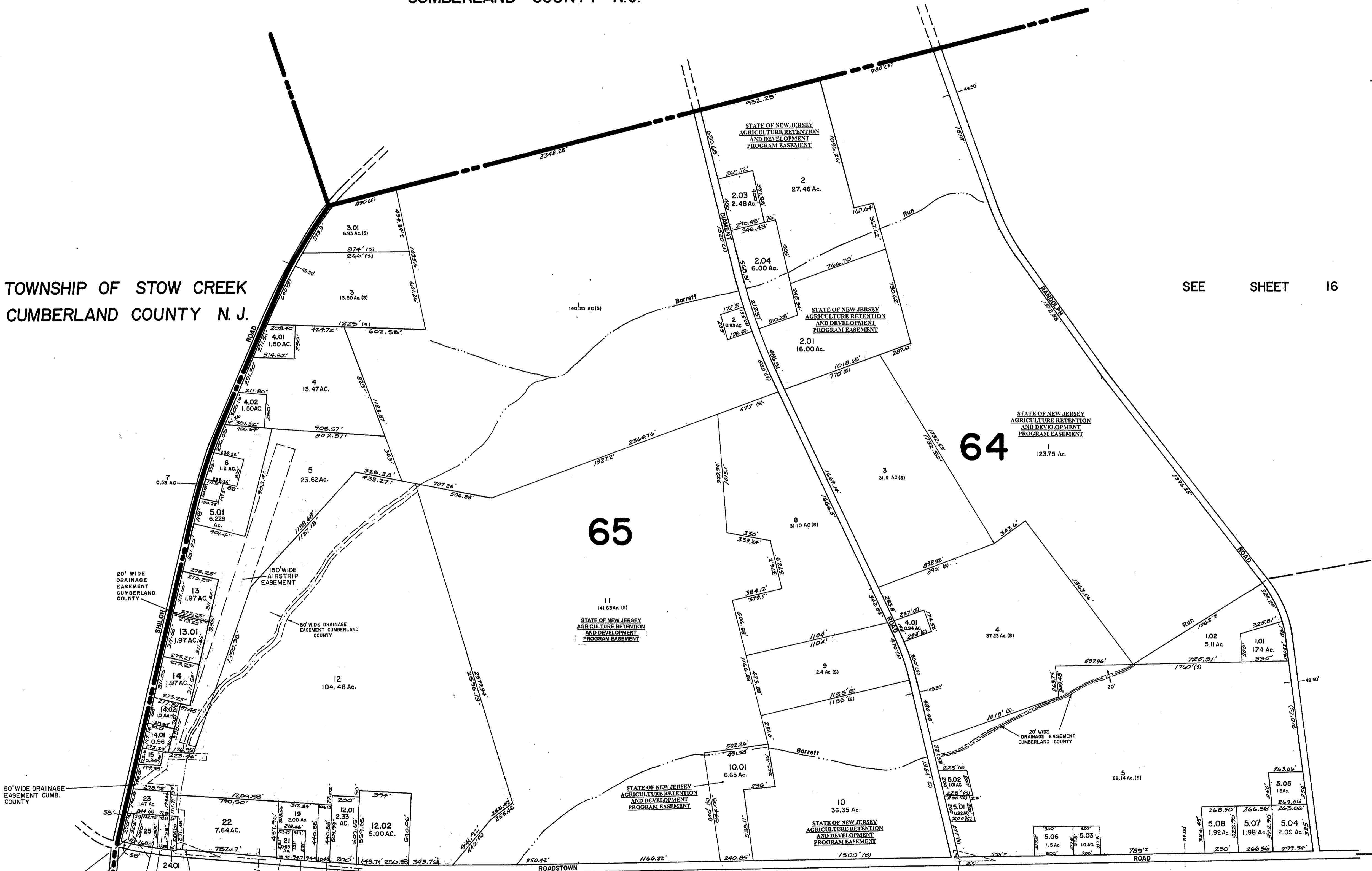


BOROUGH OF SHILOH
CUMBERLAND COUNTY N.J.



TOWNSHIP OF STOW CREEK
CUMBERLAND COUNTY N. J.

SEE SHEET 16



SEE SHEET 17

SEE SHEET 21

SEE SHEET 22

TAX ASSESSMENT MAP
HOPEWELL TOWNSHIP
CUMBERLAND COUNTY N. J.

SCALE: 1" = 400' MAY, 1976
ALBERT A. FRALINGER JR., CONSULTING ENGINEER
629 SHILOH PIKE, BRIDGETON, N. J. 08302

NEW JERSEY DEPARTMENT OF THE TREASURY
DIVISION OF TAXATION
LOCAL PROPERTY AND PUBLIC UTILITY BRANCH

APPROVED AS A TAX MAP PURSUANT TO THE
PROVISIONS OF CHAPTER 175, LAWS OF 1913, AND
FOR THE DIRECTOR, DIVISION OF TAXATION

J. N. [Signature]

BY LIC. # 5009 P.E. & L.S.
DATE 2.6.1976 SERIAL NO. 557

BLOCK 65 LOT 18 IS UNASSIGNED