

ALLOWAY TOWNSHIP
SALEM COUNTY N.J.

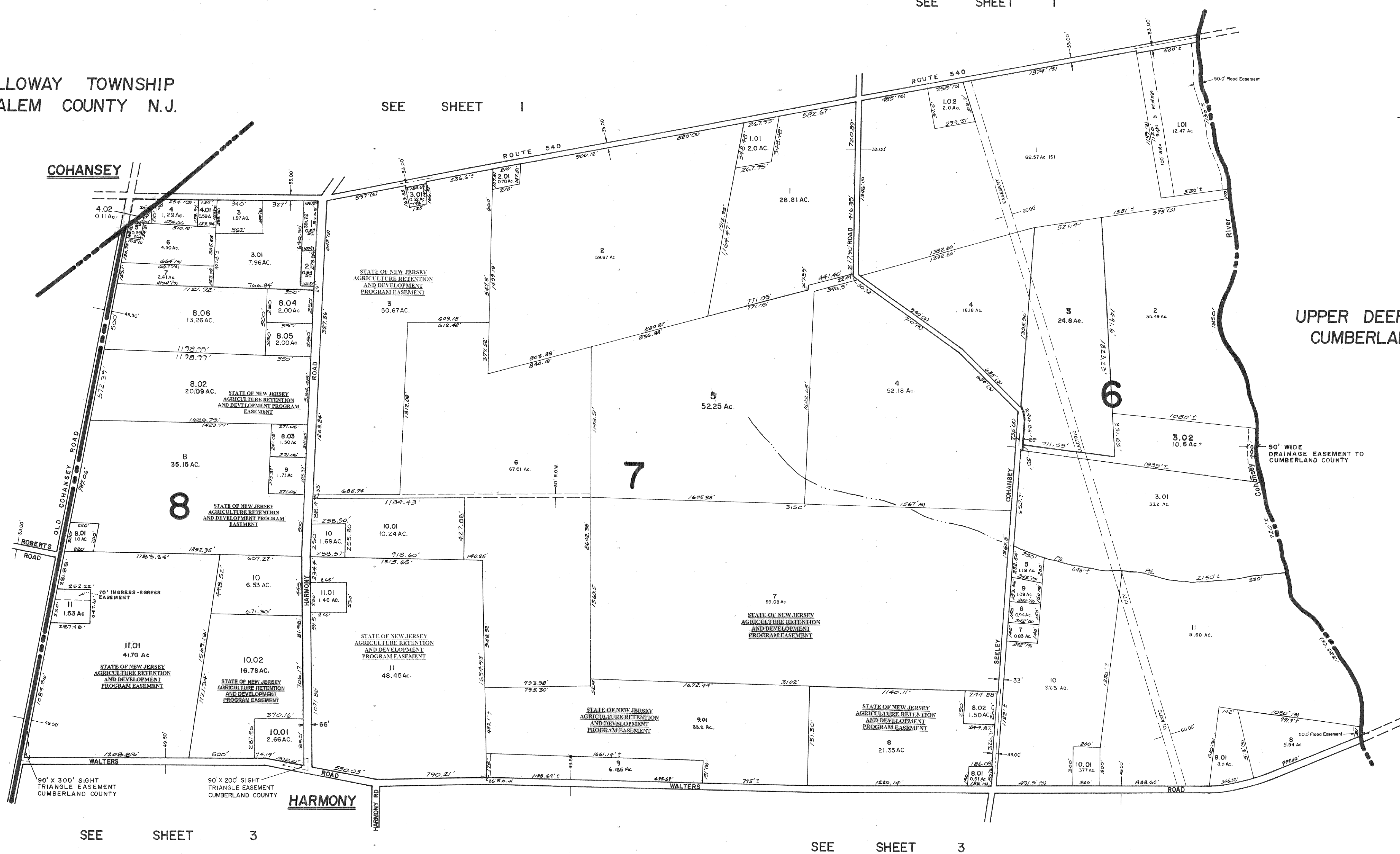
SEE SHEET I

SEE SHEET I



UPPER DEERFIELD TOWNSHIP
CUMBERLAND COUNTY N.J.

STOW CREEK TOWNSHIP
CUMBERLAND COUNTY N.J.



SEE SHEET 3

SEE SHEET 3

TAX ASSESSMENT MAP
HOPEWELL TOWNSHIP
CUMBERLAND COUNTY N.J.

SCALE: 1"=400' MAY, 1976
ALBERT A. FRALINGER JR., CONSULTING ENGINEER
629 SILOH PIKE, BRIDGETON, N.J. 08302

NEW JERSEY DEPARTMENT OF THE TREASURY
DIVISION OF TAXATION
LOCAL PROPERTY AND PUBLIC UTILITY BRANCH

APPROVED AS A TAX MAP PURSUANT TO THE
PROVISIONS OF CHAPTER 175, LAWS OF 1913, ETC.
FOR THE DIRECTOR, DIVISION OF TAXATION

J. W. Deane
P.E. & L.S. CHIEF

DATE JUL 26 1976 # 5009 SERIAL NO. 55