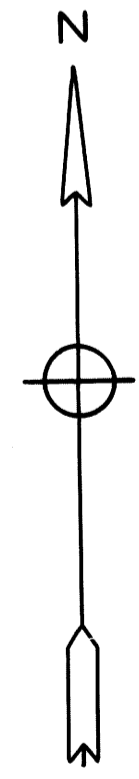
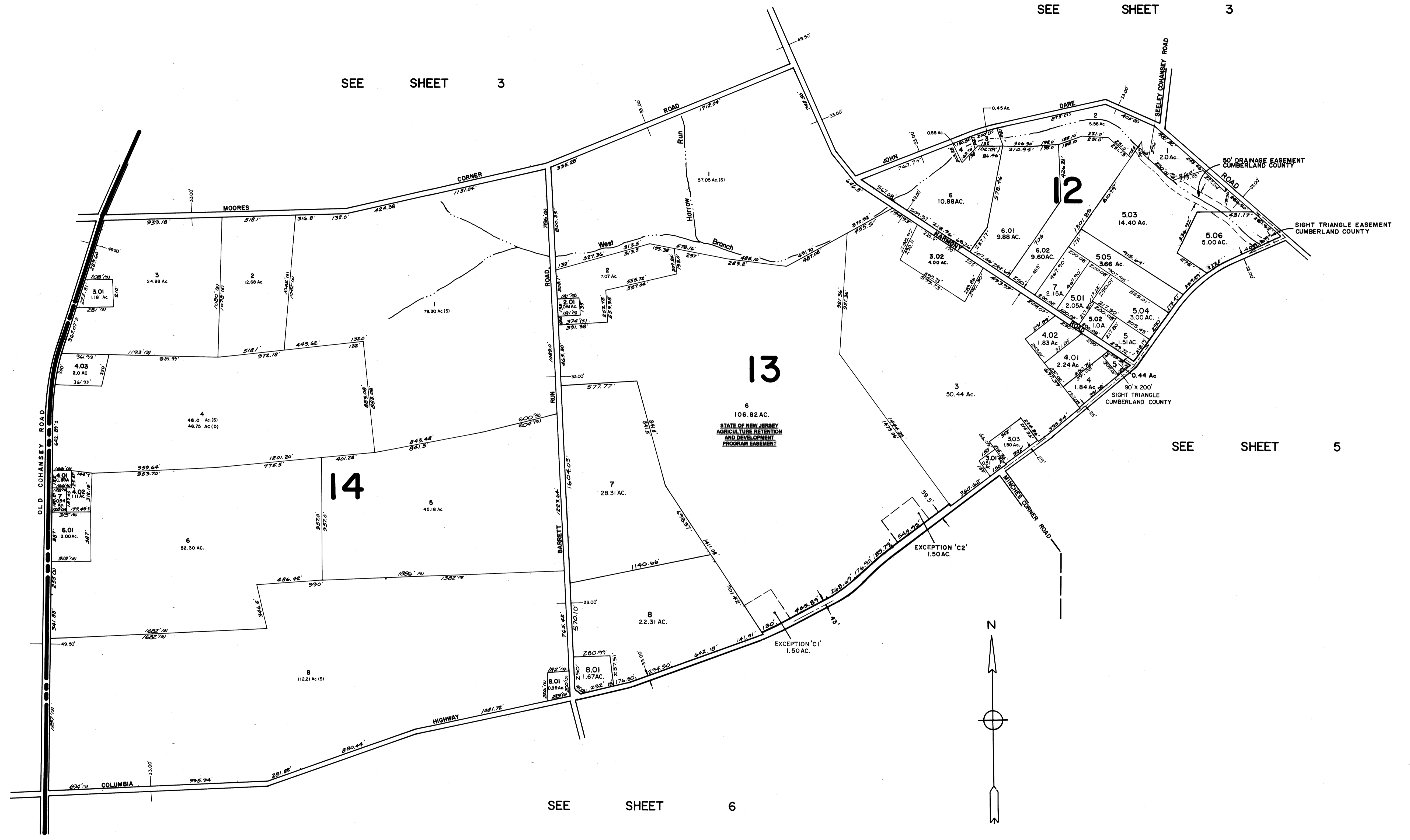


STOW CREEK TOWNSHIP  
CUMBERLAND COUNTY N.J.



NEW JERSEY DEPARTMENT OF THE TREASURY  
DIVISION OF TAXATION  
LOCAL PROPERTY AND PUBLIC UTILITY BRANCH

APPROVED AS A TAX MAP PURSUANT TO THE PROVISIONS OF CHAPTER 175, LAWS OF 1913, 6-C FOR THE DIRECTOR, DIVISION OF TAXATION

*J. N. Deans*

BY LIC. # 5009 P.E. & L.S. CHIEF  
DATE JUL 26 1976 SERIAL NO. 557

TAX ASSESSMENT MAP  
HOPEWELL TOWNSHIP  
CUMBERLAND COUNTY N.J.

SCALE: 1"=400' MAY, 1976

ALBERT A. FRALINGER JR., CONSULTING ENGINEER  
629 SHILOH PIKE, BRIDGETON, N.J. 08302