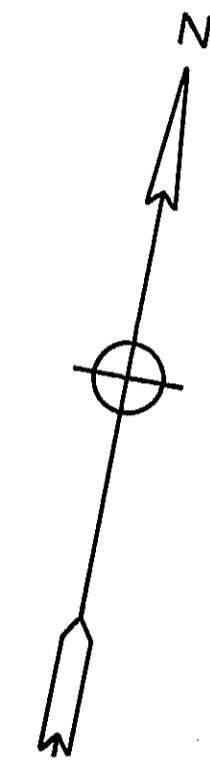
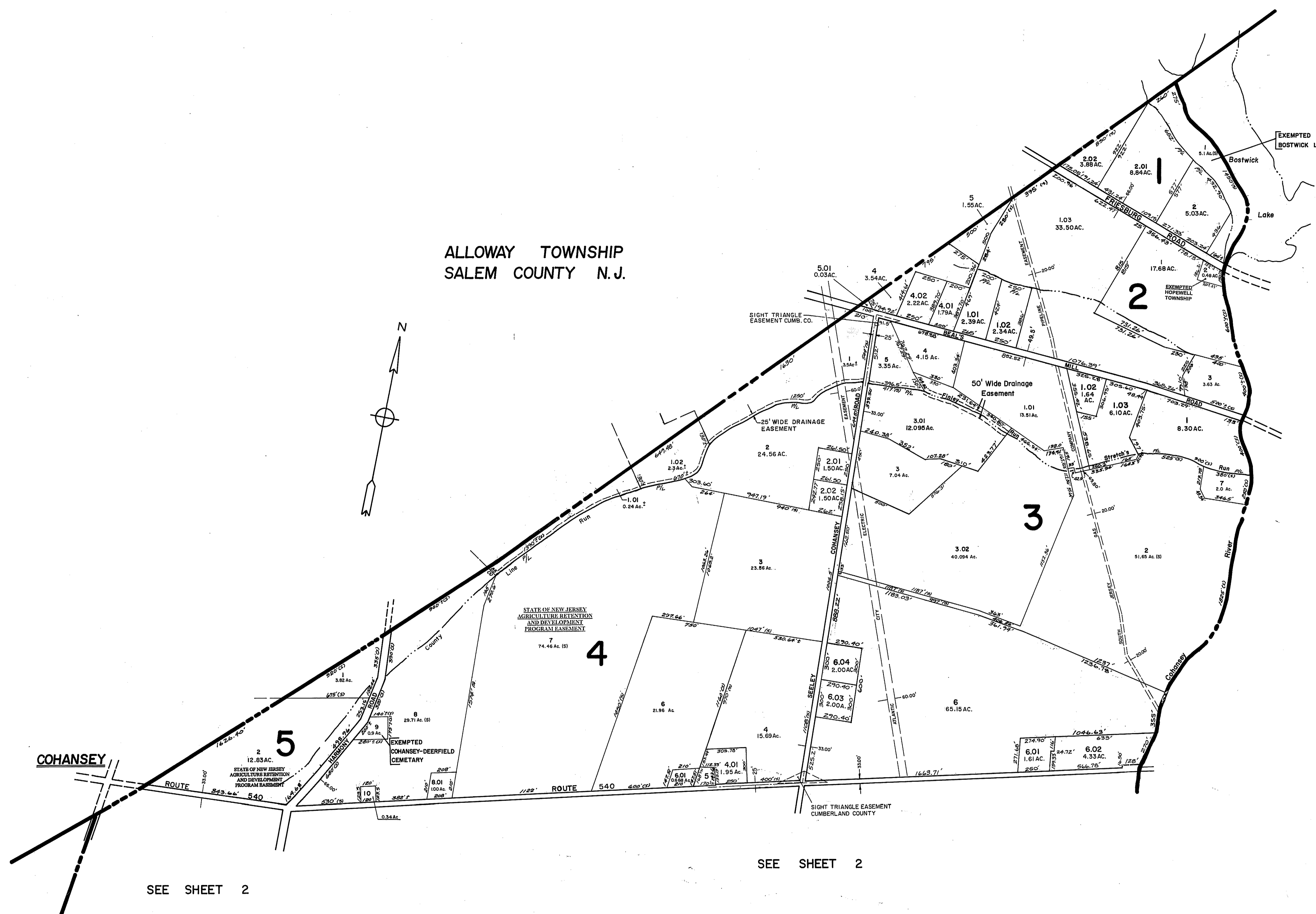


ALLOWAY TOWNSHIP
SALEM COUNTY N.J.

UPPER DEERFIELD TOWNSHIP
CUMBERLAND COUNTY N.J.



SEE SHEET 2

SEE SHEET 2

STOW CREEK TOWNSHIP
CUMBERLAND COUNTY N.J.

NEW JERSEY DEPARTMENT OF THE TREASURY
DIVISION OF TAXATION
LOCAL PROPERTY AND PUBLIC UTILITY BRANCH
APPROVED AS A TAX MAP PURSUANT TO THE
PROVISIONS OF CHAPTER 175, LAWS OF 1913, 410,
FOR THE DIRECTOR, DIVISION OF TAXATION
J. N. Deans
BY LIC. # 5009 P.E. & L.S. CHIEF
DATE 26 1978 SERIAL NO. 552

TAX ASSESSMENT MAP
HOPEWELL TOWNSHIP
CUMBERLAND COUNTY N.J.
SCALE: 1"=400' MAY, 1978
ALBERT A. FRALINGER JR., CONSULTING ENGINEER
629 SHILOH PIKE, BRIDGETON, N.J. 08302