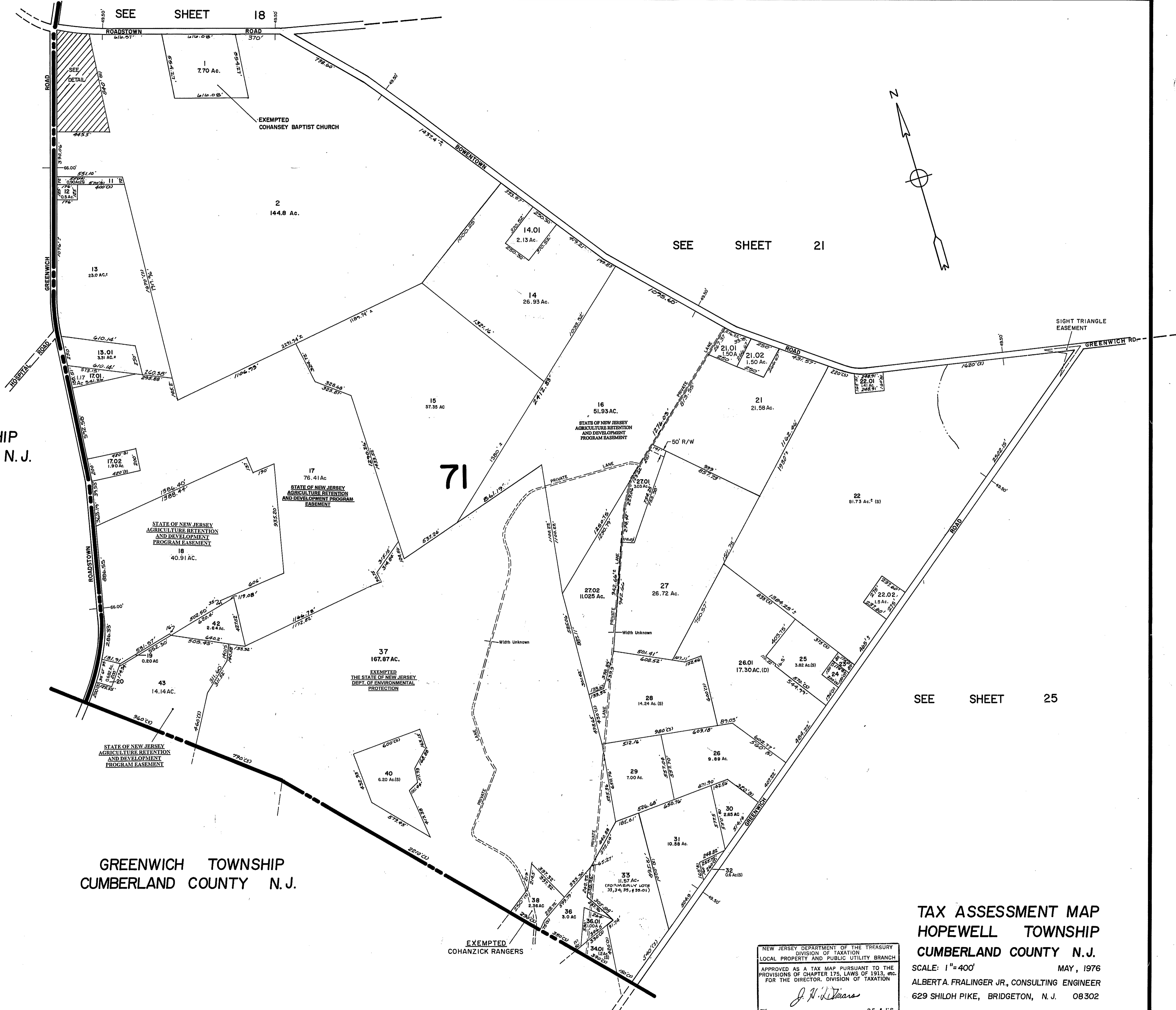


71

STOW CREEK TOWNSHIP  
CUMBERLAND COUNTY N.J.



71

GREENWICH TOWNSHIP  
CUMBERLAND COUNTY N.J.

**TAX ASSESSMENT MAP**  
**HOPEWELL TOWNSHIP**  
**CUMBERLAND COUNTY N.J.**  
SCALE: 1" = 400' MAY, 1976  
ALBERT A. FRALINGER JR., CONSULTING ENGINEER  
629 SHILOH PIKE, BRIDGETON, N.J. 08302

NEW JERSEY DEPARTMENT OF THE TREASURY  
DIVISION OF TAXATION  
LOCAL PROPERTY AND PUBLIC UTILITY BRANCH  
APPROVED AS A TAX MAP PURSUANT TO THE  
PROVISIONS OF CHAPTER 175, LAWS OF 1915, ETC.  
FOR THE DIRECTOR, DIVISION OF TAXATION  
*J. H. DeWane*  
BY: \_\_\_\_\_ P.E. & L.S. CHIEF  
DATE: JUL 26 1976 SERIAL NO. 557