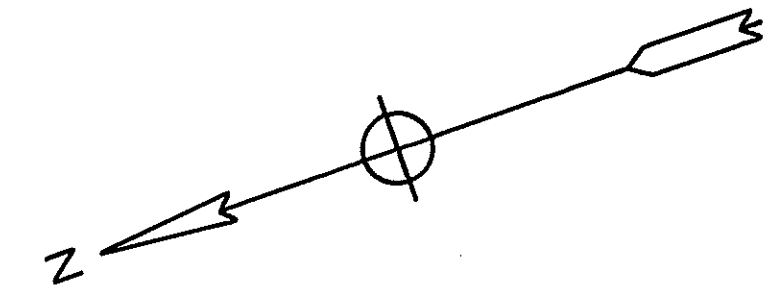


FAIRFIELD TOWNSHIP
CUMBERLAND COUNTY N.J.

CITY OF BRIDGETON
CUMBERLAND
COUNTY N. J.

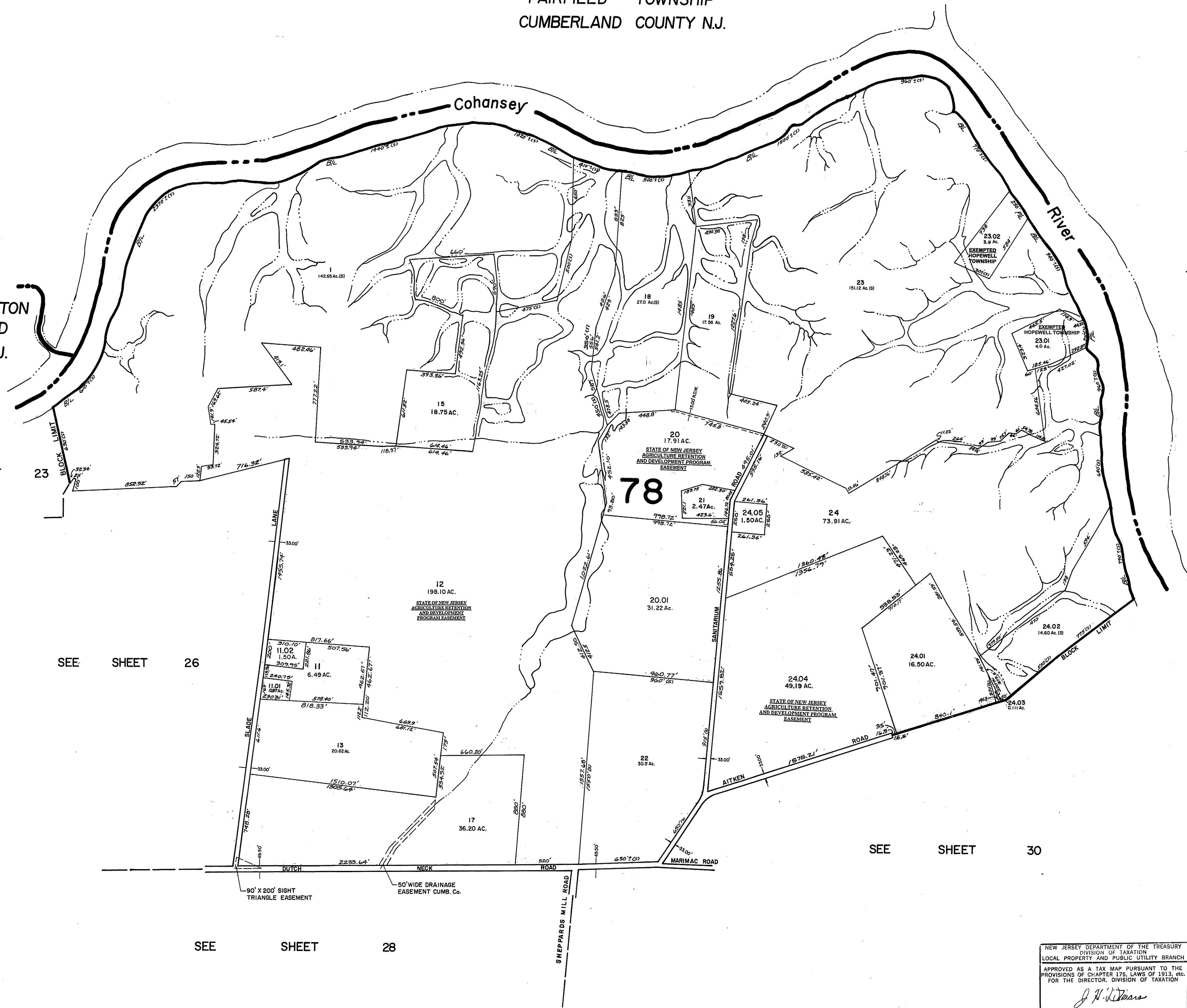


SEE SHEET 23

SEE SHEET 26

SEE SHEET 30

SEE SHEET 28



BLOCK 78, LOT 16 IS UNASSIGNED AND 14

NEW JERSEY DEPARTMENT OF THE TREASURY
DIVISION OF TAXATION
LOCAL PROPERTY AND PUBLIC UTILITY BRANCH

APPROVED AS A TAX MAP PURSUANT TO THE
PROVISIONS OF CHAPTER 175, LAWS OF 1913, ETC.
FOR THE DIRECTOR, DIVISION OF TAXATION

J. H. Deans
CHIEF

BY LIC. # 5009 P.E. & L.S.
DATE: JUL 26 1976 SERIAL NO. 557

TAX ASSESSMENT MAP
HOPEWELL TOWNSHIP
CUMBERLAND COUNTY N.J.

SCALE: 1"=400' MAY, 1976

ALBERT A. FRALINGER JR., CONSULTING ENGINEER
629 SHILOH PIKE, BRIDGETON, N. J. 08302