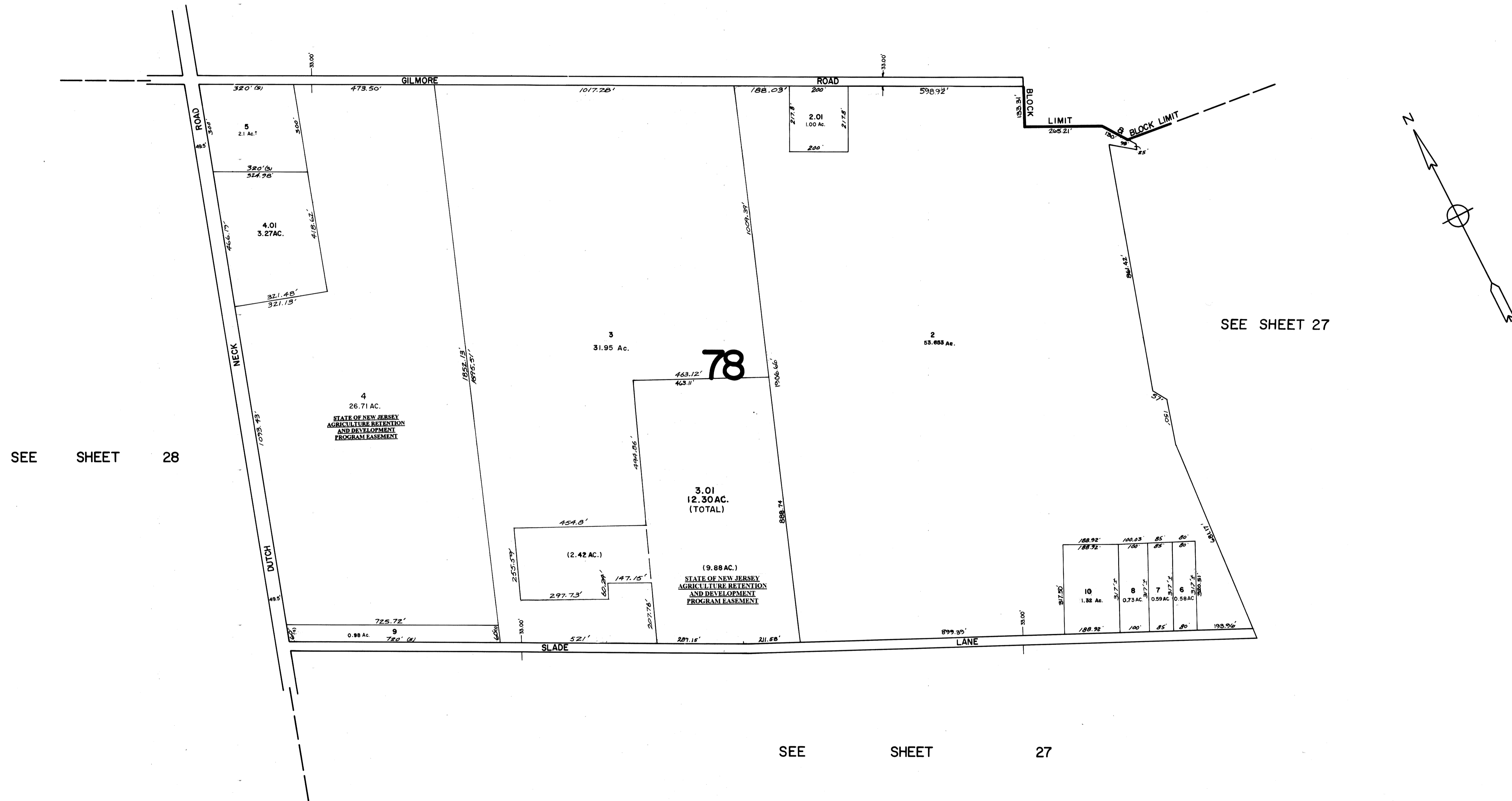


SEE SHEET 23



TAX ASSESSMENT MAP
HOPEWELL TOWNSHIP
CUMBERLAND COUNTY N.J.
 SCALE: 1" = 200'
 MAY, 1976
 ALBERTA. FRALINGER JR., CONSULTING ENGINEER
 629 SHILOH PIKE, BRIDGETON, N. J. 08302

NEW JERSEY DEPARTMENT OF THE TREASURY
 DIVISION OF TAXATION
 LOCAL PROPERTY AND PUBLIC UTILITY BRANCH
 APPROVED AS A TAX MAP PURSUANT TO THE
 PROVISIONS OF CHAPTER 175, LAWS OF 1913, ETC.
 FOR THE DIRECTOR, DIVISION OF TAXATION
 BY: *Alberta Fralinger Jr.*
 P.E. & L.S.
 LIC. # 5009
 CHIEF
 DATE: JUL 26 1976 SERIAL NO. 557