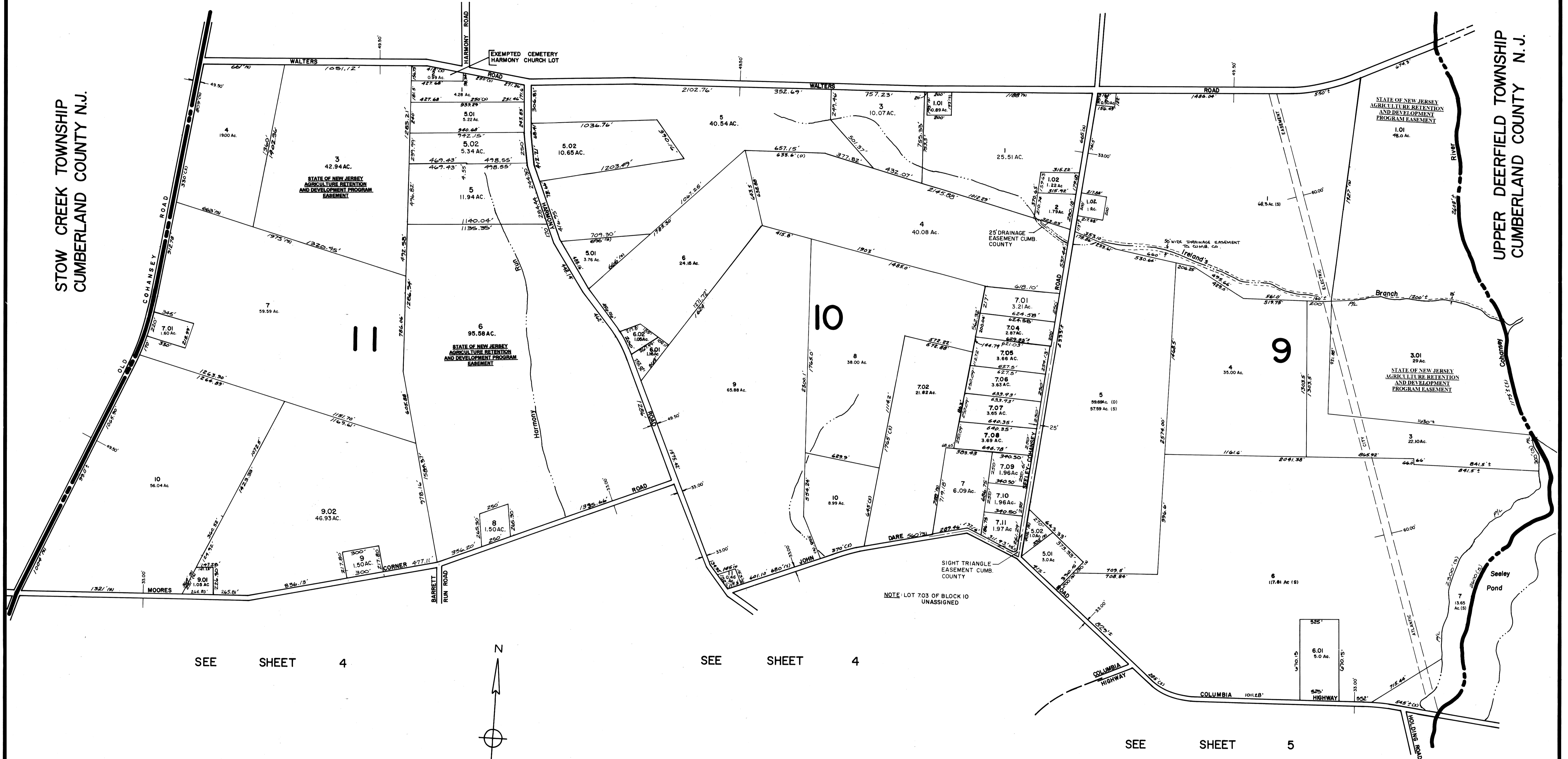


SEE SHEET 2

SEE SHEET 2

STOW CREEK TOWNSHIP
CUMBERLAND COUNTY N.J.

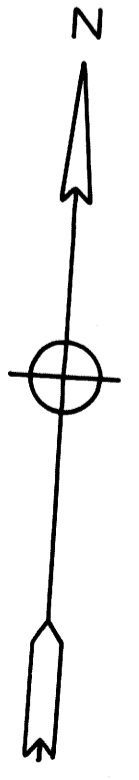
UPPER DEERFIELD TOWNSHIP
CUMBERLAND COUNTY N.J.



SEE SHEET 4

SEE SHEET 4

SEE SHEET 5



**TAX ASSESSMENT MAP
HOPEWELL TOWNSHIP
CUMBERLAND COUNTY N.J.**

SCALE: 1"=400' MAY, 1976
ALBERT A. FRALINGER JR., CONSULTING ENGINEER
629 SHILOH PIKE, BRIDGETON, N. J. 08302

NEW JERSEY DEPARTMENT OF THE TREASURY
DIVISION OF TAXATION
LOCAL PROPERTY AND PUBLIC UTILITY BRANCH

APPROVED AS A TAX MAP PURSUANT TO THE
PROVISIONS OF CHAPTER 175, LAWS OF 1913, E.G.
FOR THE DIRECTOR, DIVISION OF TAXATION

J. H. Deane

BY: *J. H. Deane* P.E. & L.S.
DATE: JUL 26 1976 # 5009 SERIAL NO. 55