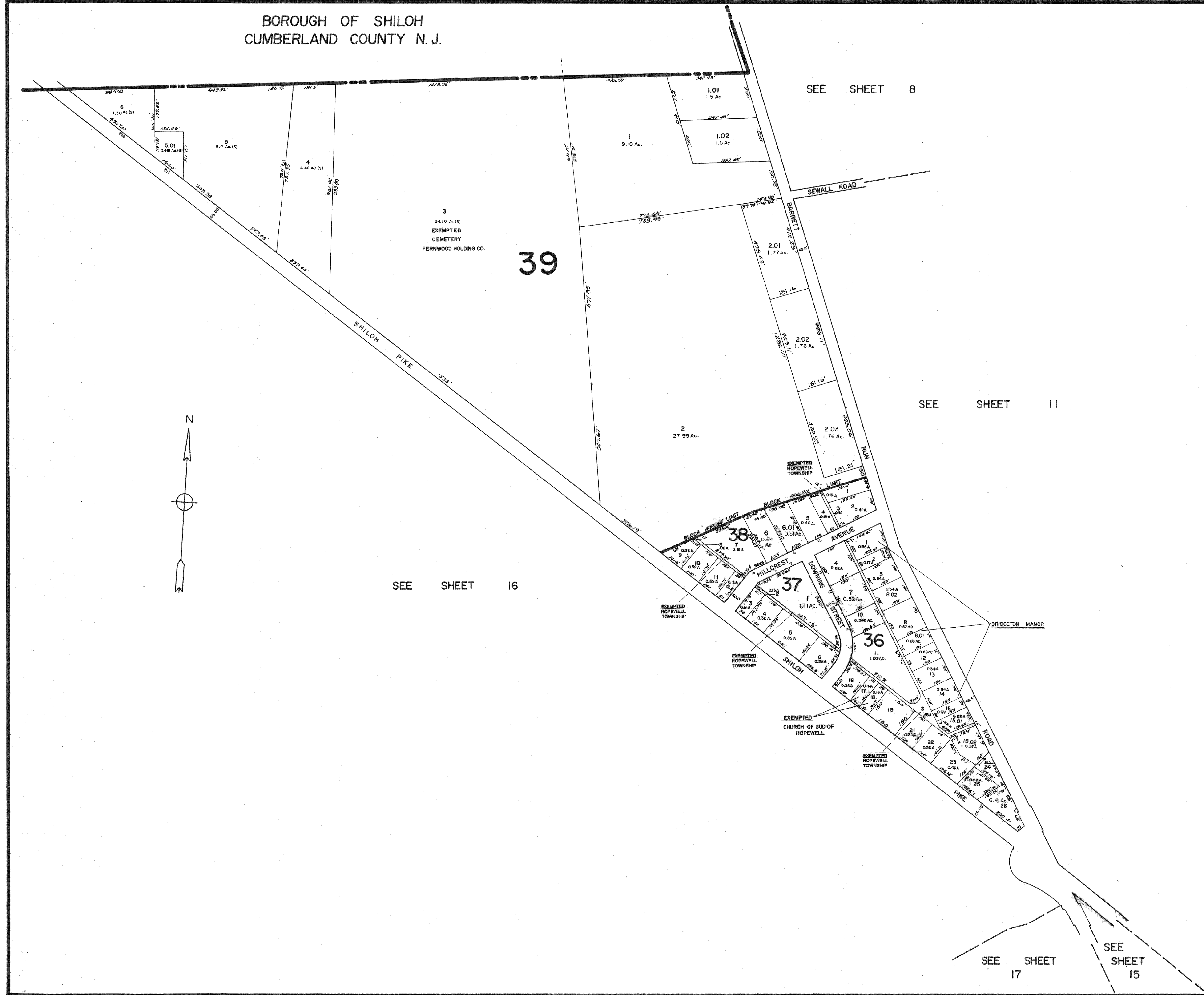


BOROUGH OF SHILOH
CUMBERLAND COUNTY N. J.

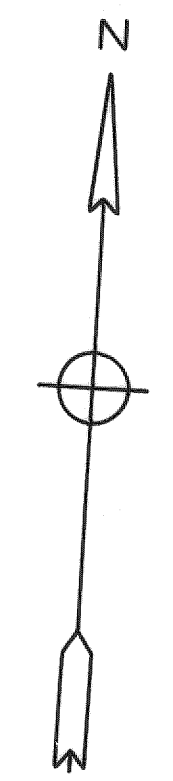


SEE SHEET 8

SEE SHEET 11

SEE SHEET 16

NOTE:
BLOCK 36, LOTS 6, 9 ARE UNASSIGNED.



NEW JERSEY DEPARTMENT OF THE TREASURY
DIVISION OF TAXATION
LOCAL PROPERTY AND PUBLIC UTILITY BRANCH
APPROVED AS A TAX MAP PURSUANT TO THE
PROVISIONS OF CHAPTER 175, LAWS OF 1913, etc.
FOR THE DIRECTOR, DIVISION OF TAXATION

J. H. Williams
BY: LIC. # 5009 P.E. & L.S. CHIEF
DATE: JUL 26 1976 SERIAL NO. 557

TAX ASSESSMENT MAP
HOPEWELL TOWNSHIP
CUMBERLAND COUNTY N. J.
SCALE: 1"=200' MAY, 1976
ALBERT A. FRALINGER JR., CONSULTING ENGINEER
629 SHILOH PIKE, BRIDGETON, N. J. 08302

SEE SHEET 17

SEE SHEET 15