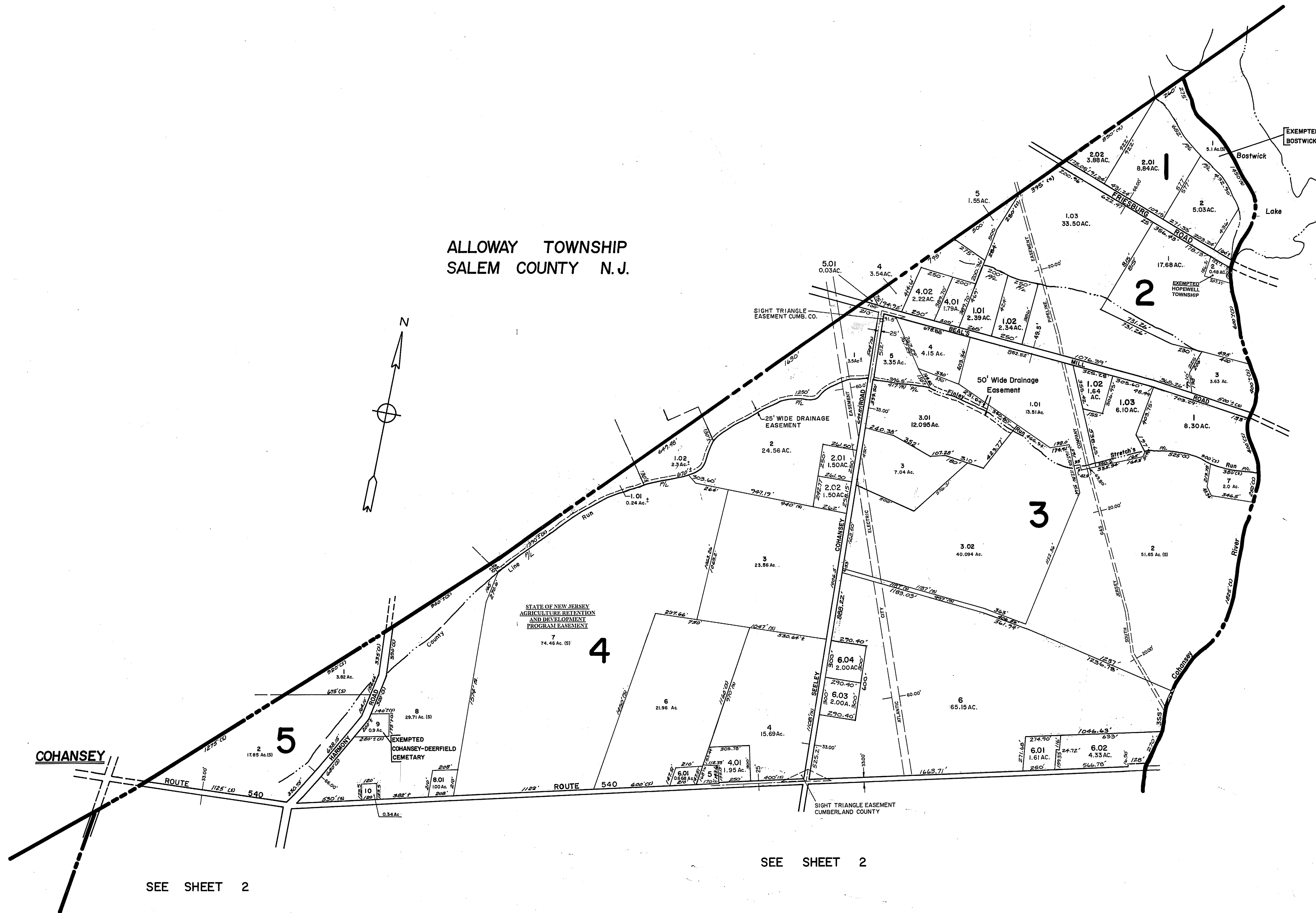


ALLOWAY TOWNSHIP  
SALEM COUNTY N.J.

UPPER DEERFIELD TOWNSHIP  
CUMBERLAND COUNTY N.J.



SEE SHEET 2

SEE SHEET 2

STOW CREEK TOWNSHIP  
CUMBERLAND COUNTY N.J.

NEW JERSEY DEPARTMENT OF THE TREASURY  
DIVISION OF TAXATION  
LOCAL PROPERTY AND PUBLIC UTILITY BRANCH  
APPROVED AS A TAX MAP PURSUANT TO THE  
PROVISIONS OF CHAPTER 175, LAWS OF 1913, ETC.  
FOR THE DIRECTOR, DIVISION OF TAXATION  
*J. N. Deane*  
BY: \_\_\_\_\_ P.E. & L.S. CHIEF  
LIC. # 5009  
DATE: 2 6 1978 SERIAL NO. 557

TAX ASSESSMENT MAP  
HOPEWELL TOWNSHIP  
CUMBERLAND COUNTY N.J.  
SCALE: 1"=400' MAY, 1976  
ALBERT A. FRALINGER JR., CONSULTING ENGINEER  
629 SHILOH PIKE, BRIDGETON, N.J. 08302