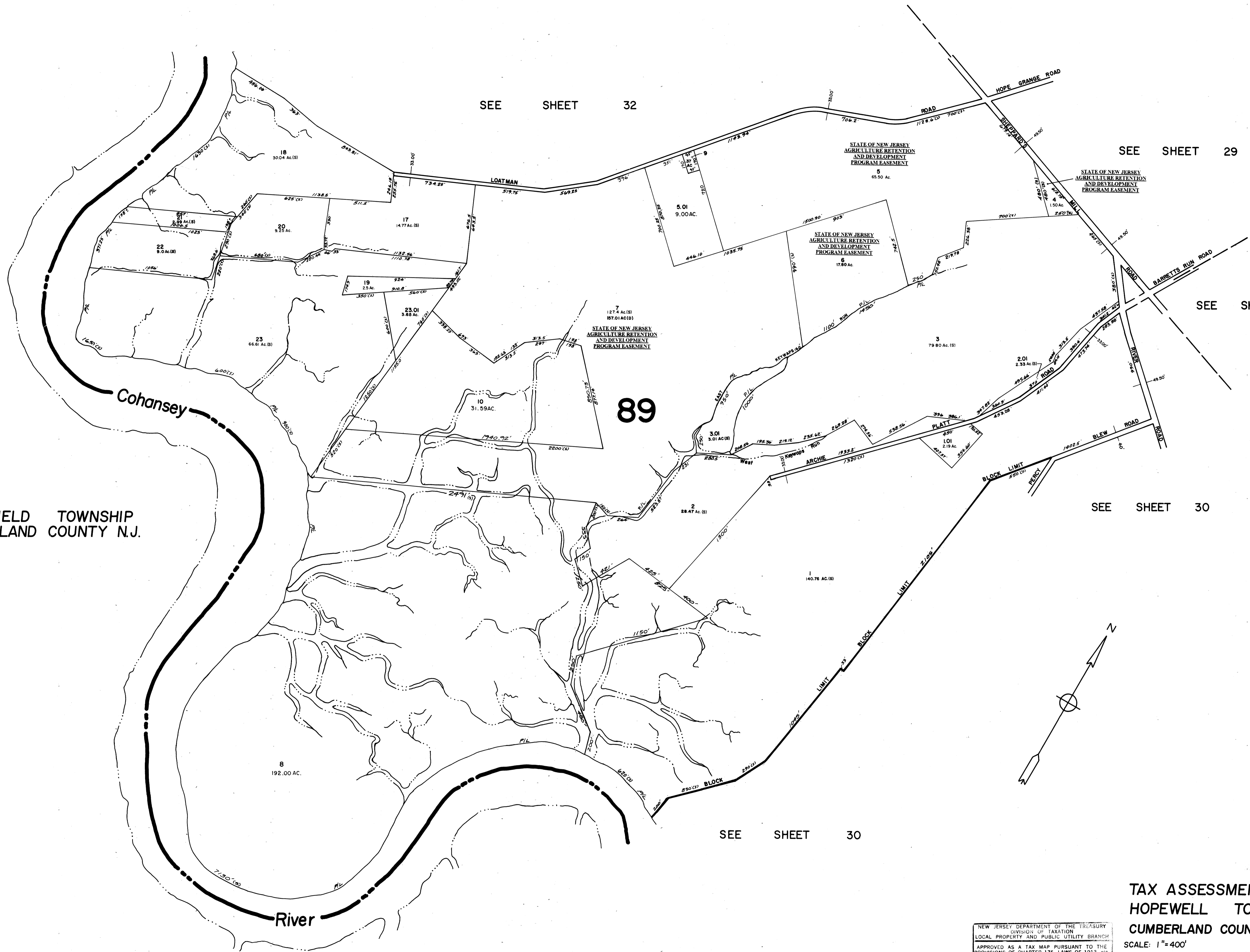


FAIRFIELD TOWNSHIP
CUMBERLAND COUNTY N.J.



**TAX ASSESSMENT MAP
HOPEWELL TOWNSHIP
CUMBERLAND COUNTY N.J.**

SCALE: 1"=400' MAY, 1976

ALBERT A FRALINGER JR., CONSULTING ENGINEER
629 SHILOH PIKE, BRIDGETON, N.J. 08302

NEW JERSEY DEPARTMENT OF THE TREASURY
DIVISION OF TAXATION
LOCAL PROPERTY AND PUBLIC UTILITY BRANCH
APPROVED AS A TAX MAP PURSUANT TO THE
PROVISIONS OF CHAPTER 175, LAWS OF 1913, ETC.
FOR THE DIRECTOR, DIVISION OF TAXATION

J. H. DeWane
BY: _____ P.E. & L.S.
DATE: III 26 1976 SERIAL NO. 557