

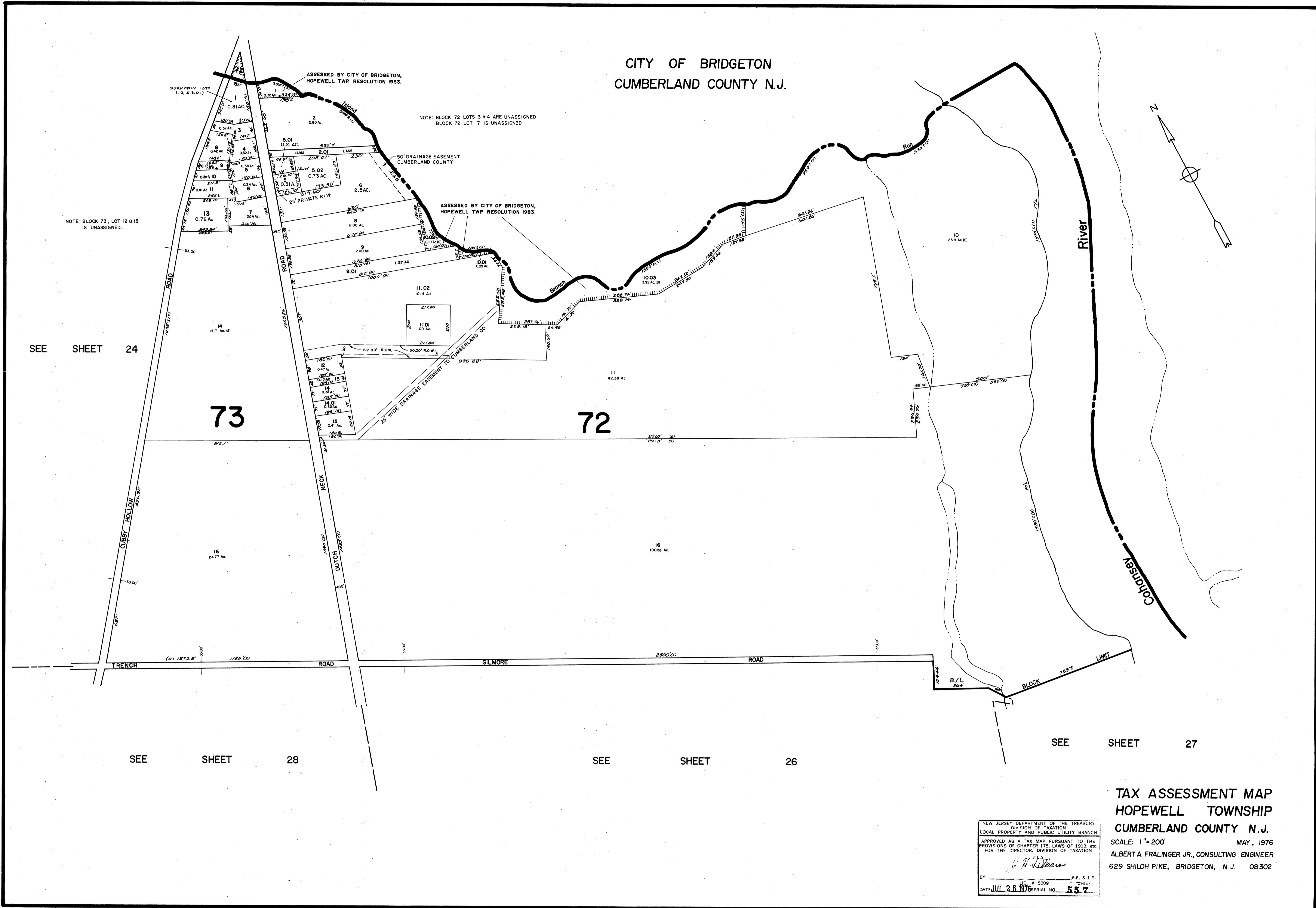
CITY OF BRIDGETON
CUMBERLAND COUNTY N.J.

ASSESSED BY CITY OF BRIDGETON,
HOPEWELL TWP RESOLUTION 1983.

NOTE: BLOCK 72 LOTS 3 & 4 ARE UNASSIGNED
BLOCK 72 LOT 7 IS UNASSIGNED

ASSESSED BY CITY OF BRIDGETON,
HOPEWELL TWP RESOLUTION 1983.

NOTE: BLOCK 73, LOT 12 & 15
IS UNASSIGNED.



TAX ASSESSMENT MAP
HOPEWELL TOWNSHIP
CUMBERLAND COUNTY N.J.
SCALE: 1"=200' MAY, 1976
ALBERT A. FRALINGER JR., CONSULTING ENGINEER
629 SHILOH PIKE, BRIDGETON, N.J. 08302

NEW JERSEY DEPARTMENT OF THE TREASURY
DIVISION OF TAXATION
LOCAL PROPERTY AND PUBLIC UTILITY BRANCH
APPROVED AS A TAX MAP PURSUANT TO THE
PROVISIONS OF CHAPTER 175, LAWS OF 1913, ETC.
FOR THE DIRECTOR, DIVISION OF TAXATION
Albert A. Fralinger Jr.
BY: _____ LIC. # 5009 P.E. & L.S. CHIEF
DATE: JUL 26 1976 SERIAL NO. 557