

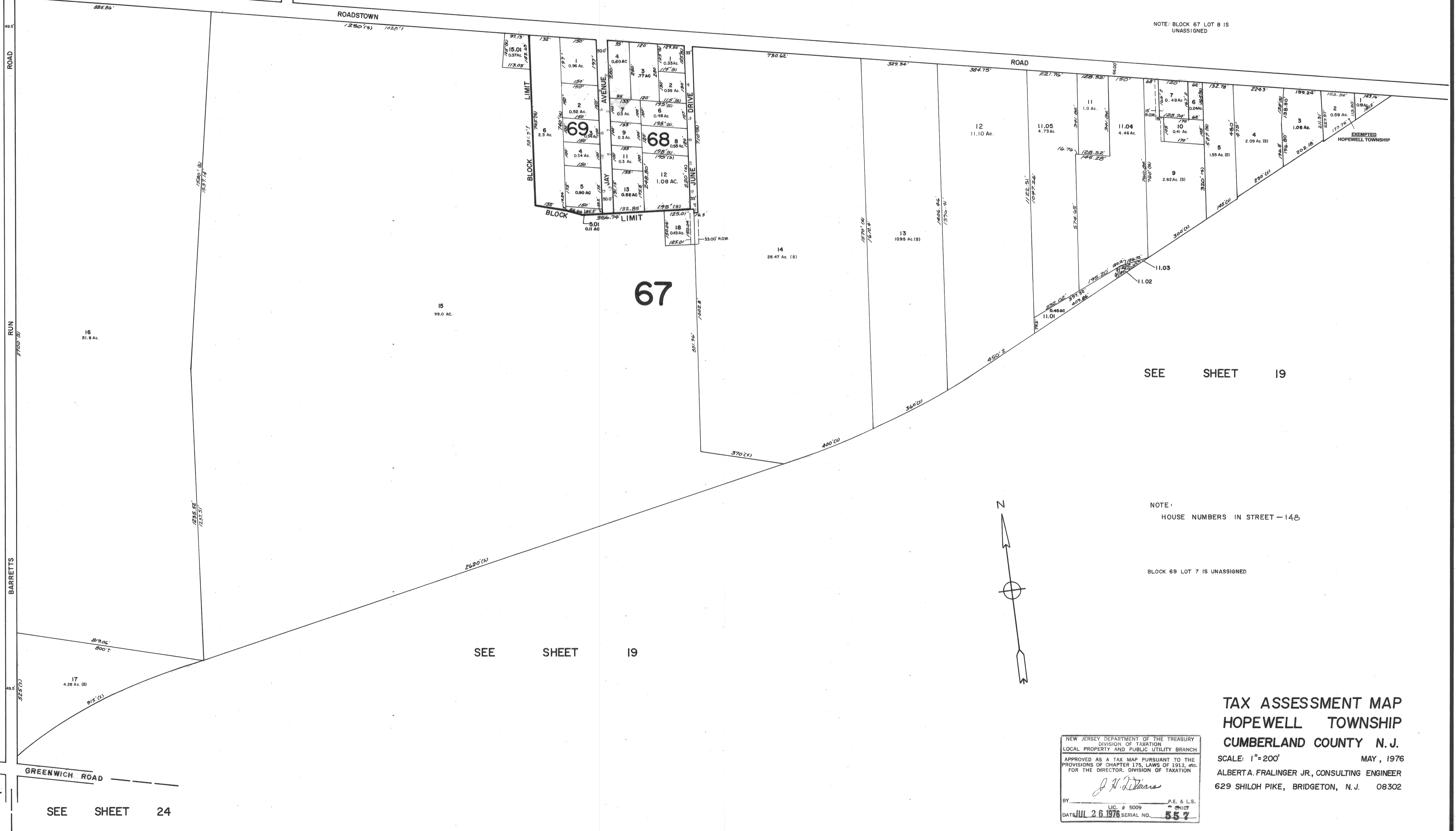
SEE SHEET 17

SEE SHEET 15

SEE SHEET 14

WEST PARK DRIVE

NOTE: BLOCK 67 LOT 8 IS UNASSIGNED



SEE SHEET 21

SEE SHEET 25

SEE SHEET 19

SEE SHEET 19

NOTE: HOUSE NUMBERS IN STREET - 148

BLOCK 69 LOT 7 IS UNASSIGNED

**TAX ASSESSMENT MAP  
HOPEWELL TOWNSHIP  
CUMBERLAND COUNTY N. J.**

SCALE: 1" = 200' MAY, 1976  
ALBERT A. FRALINGER JR., CONSULTING ENGINEER  
629 SHILOH PIKE, BRIDGETON, N. J. 08302

NEW JERSEY DEPARTMENT OF THE TREASURY  
DIVISION OF TAXATION  
LOCAL PROPERTY AND PUBLIC UTILITY BRANCH  
APPROVED AS A TAX MAP PURSUANT TO THE  
PROVISIONS OF CHAPTER 175, LAWS OF 1913, etc.  
FOR THE DIRECTOR, DIVISION OF TAXATION  
*J. H. DeWitt*  
BY: \_\_\_\_\_ LIC. # 5009 P.E. & L.S. CHIEF  
DATE: JUL 26 1976 SERIAL NO. 557